



7520 Conrad Street  
Burnaby, B.C. V5A 2H7

Phone : 604 415-9944  
Fax : 604 415-9954

DRAWN BY : R.H.	DATE DRAWN : DEC. 05/12
--------------------	----------------------------

APPROVED :

REVISION : NO:	DATE:

SCALE :

LOAD RATING

MATERIAL SPECIFICATION:

SEE DWG. NO. 19

SPECIFIED FOR:

DESCRIPTION:

PREDL SYSTEMS FULLY LINED  
MANHOLE BASE WITH CONCENTRIC  
STYLE LID, INSIDE DROP, NON SKID  
BASELINER AND EXTENDED BASE

DWG. NO. <b>3AA</b>	REV. NO. <b>*</b>
------------------------	----------------------

CATALOG NUMBER:

INSIDE DROP  
PREDL TYPE 300  
( SEE DETAILS DWG. 8 )

SURE GRIP - NON SKID PP-R  
STYLE TEXTURE LOCATED ON  
BENCH SURFACE AS SHOWN  
( SEE DETAIL DWG. 3C )

BELL ( SEE DETAIL DWG. 6 )

**NOTES:**

A. The baseliner and the wall liner are compatible and form a homogeneous lining system designed to make the structure gas tight and watertight (ASTM 1244)

B. All welded seams will be spark tested in accordance with spark-tester manufacturers instructions.

C. After all pipes are installed and backfilled the manhole may at the engineer's option, be vacuum tested in accordance with ASTM C1244 (latest revision).

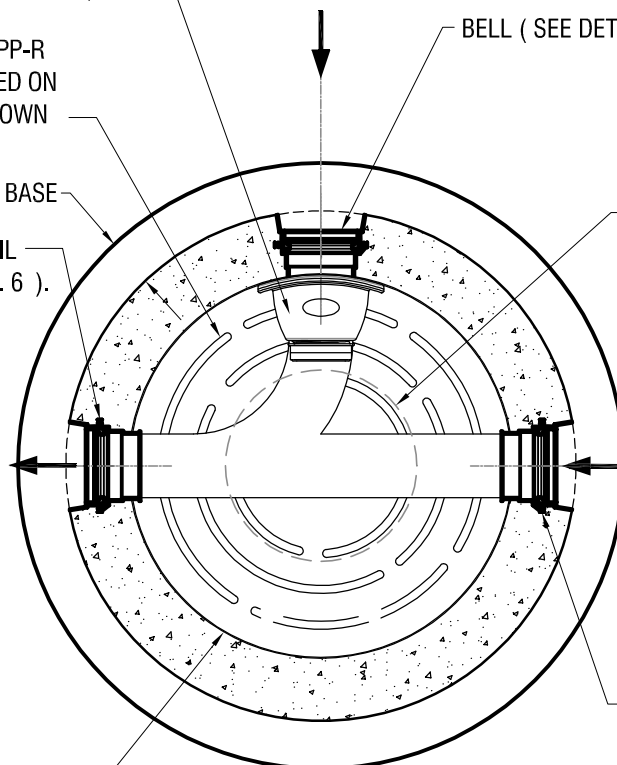
D. Only Predl Certified Welders and Fabricators are authorized to fabricate, repair, weld or test, the baseliners or wall liners.

Predl Systems Baseliner made of either FRP/PP cast into a monolithic poured min. 4,000 psi concrete base section. For spec's see dwg. No. 19

EXTENDED BASE

BELL DETAIL  
( SEE DWG. 6 )

24" OPENING IN  
ECCENTRIC LID, FLAT  
TOP OR CONE STYLE



BELL ( SEE DETAIL DWG. 6 )

PLAN VIEW N.T.S.

**PREDL SYSTEM BASE**

( FRONT ELEVATION VIEW SEE DWG. 1AA, 1AAA )

( SIDE ELEVATION VIEW SEE DWG. 2AA, 2AAA )

Wall of base section to be lined with "Corprotect 2.5mm Yellow PP with 13mm anchors Concrete Protective Liner (CPL)" (Agru Sure Grip 560) For spec's see dwg. No. 19

PREDL SYSTEMS FULLY LINED MANHOLE BASE WITH CONCENTRIC STYLE LID, INSIDE DROP, NON SKID BASELINER AND EXTENDED BASE